

NOTE: Please read this document before install the compactor body

12m³ Garbage Compactor Truck Spare Parts List

NO.	Item	Name	Coad	Quantit y	Comme nts
1	Compactor tank	Tank Assembly	YS12-0100000	1	
2		Tail Gate Assembly	YS12-0200000	1 set	
3		Scraper Assembly	YS12-0300000	1 set	
4		Slide Plate Assembly	YS12-0400000	1 set	
5		Tilt Device Assembly	YS12-0500001	1 set	
6	Spare Parts	Oil Pump		1 unit	
7		PTO		1 unit	
8		Five Function Multi-way Valve		1 set	Installed
9		Hydraulic Oil Tank	80L	1 unit	Installed
10		PLC Control Box		1 set	Installed
11		Electric System		1 set	Installed
12		Balance Valve	5060BF2	2 units	Installed
13		Hosepipe, oil pipe & Joint		1 set	Installed
14		Slide Plate Oil Cylinder	50/90-1300x830	2 units	Installed
15		Scraper Oil Cylinder	50/80-860x570	2 units	Installed
16		Lifting Oil Cylinder	50/80-840x560	2 units	Installed
17		Tilt Device Oil Cylinder	45/80-410x170	2 units	Installed
18		Push Pate Oil Cylinder	55/125-1220x2600	1 unit	Installed
19		Sliding Block	Nylon	1 set	Installed
20		Hose Protector		1 set	Installed
21		Ball Valve	1' 1/4	1 unit	Installed
22		Stainless Steel Cover	DN50	1 unit	Installed
23		Side lamps		1 set	Installed
24		Others	Cushion		2 units
25	U-style Bolt			8 units	
26	Plastic Fender (semicircle)			2 units	
27	Side Fence Assembly			2 sets	
28	Waste Water Tank Assembly (With Support)			1 unit	
29	Standard Part			1 set	

Number 1-5 Compactor tank

1. Tank Assembly:



2. Tail Gate Assembly

CEEC TRUCKS

Whatsapp: +86 159 7192 0800

Tail Gate Assembly



3. Scraper Assembly

Scraper Assembly



4. Slide Plate Assembly

Slide Plate Assembly



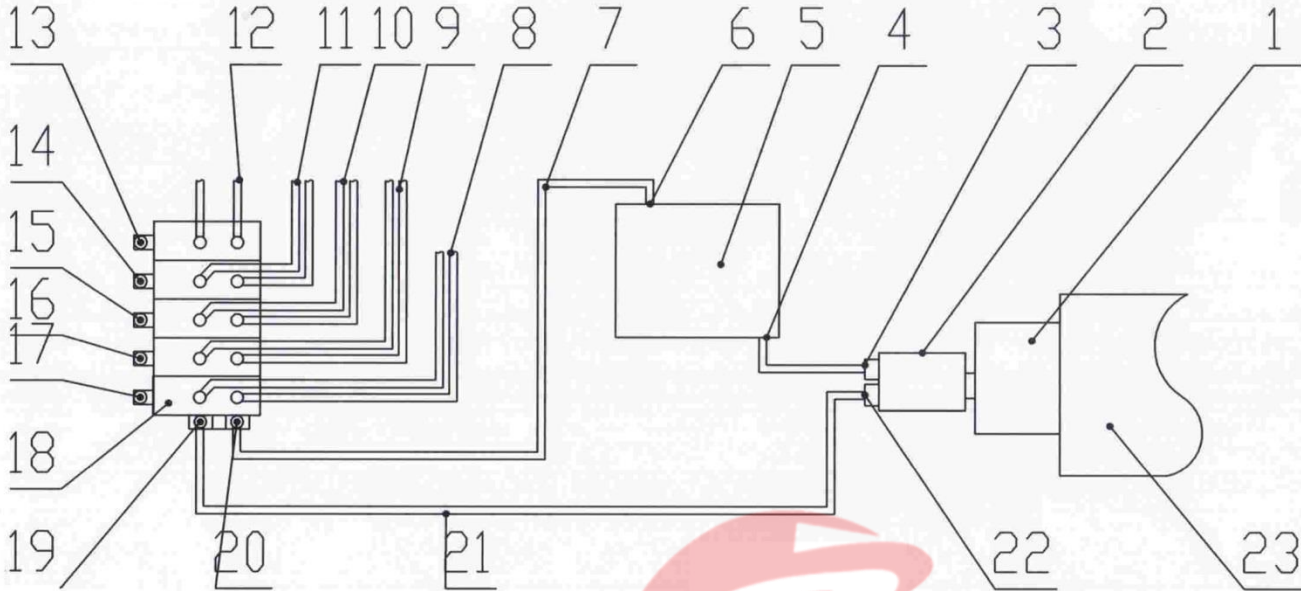
Whatsapp: +86 159 7192 0800

5. Tilt Device Assembly

Tilt Device Assembly



Number 6-23 Spare Parts

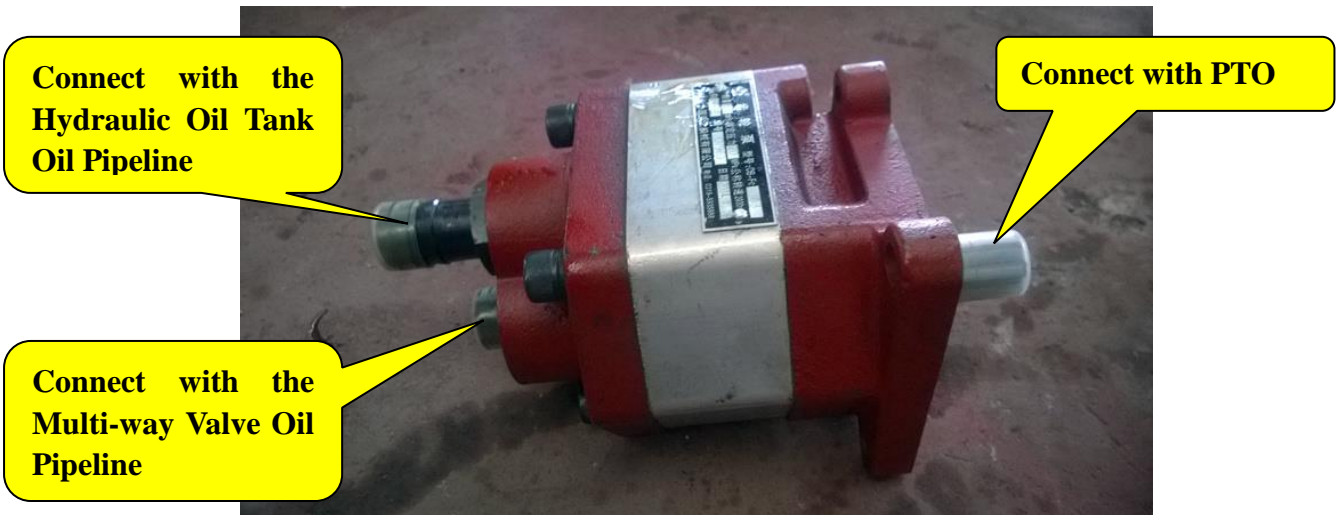


- | | | | | |
|----------------------------------|-----------------------------|-------------------------|-----------------------------------|--------------------|
| 1、PTO | 8、Push Plate Oil Cylinder | 13、Joystick for Item 12 | 18、Multi-way Valve | 23、Chassis Gearbox |
| 2、Oil Pump | 9、Slide Plate Oil Cylinder | 14、Joystick for Item 11 | 19、Oil Inlet for Multi-way Valve | |
| 3、Inlet Pipe for Oil Pump | 10、Scrapper Oil Cylinder | 15、Joystick for Item 10 | 20、Oil Outlet for Multi-way Valve | |
| 4、Outlet pipe for Oil Tank | 11、Tail Gate Oil Cylinder | 16、Joystick for Item 9 | 21、Oil Pipeline | |
| 5、Hydraulic Oil Tank | 12、Tilt Device Oil Cylinder | 17、Joystick for Item 8 | 22、Oil Inlet for Oil Pump | |
| 6、Inlet Pipe for Multi-way Valve | | | | |
| 7、Oil Pipeline | | | | |

(Hydraulic System Drawing)

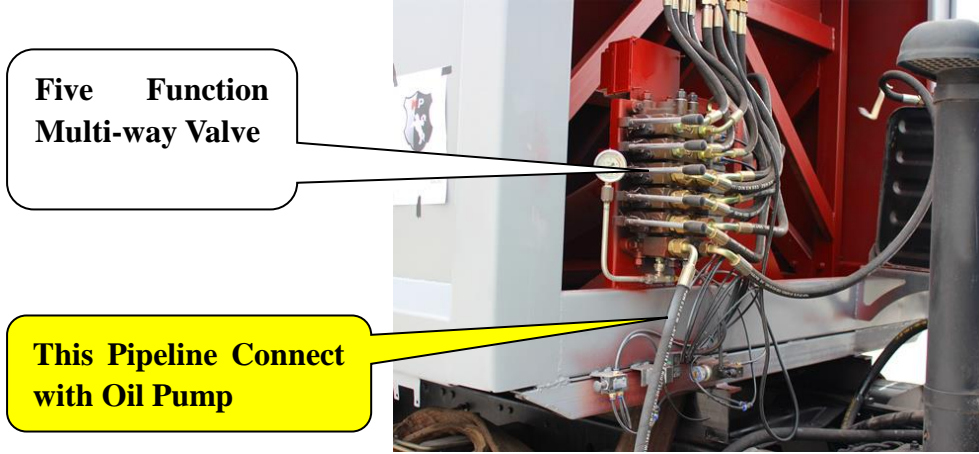
Whatsapp: +86 159 7192 0800

6. Oil Pump

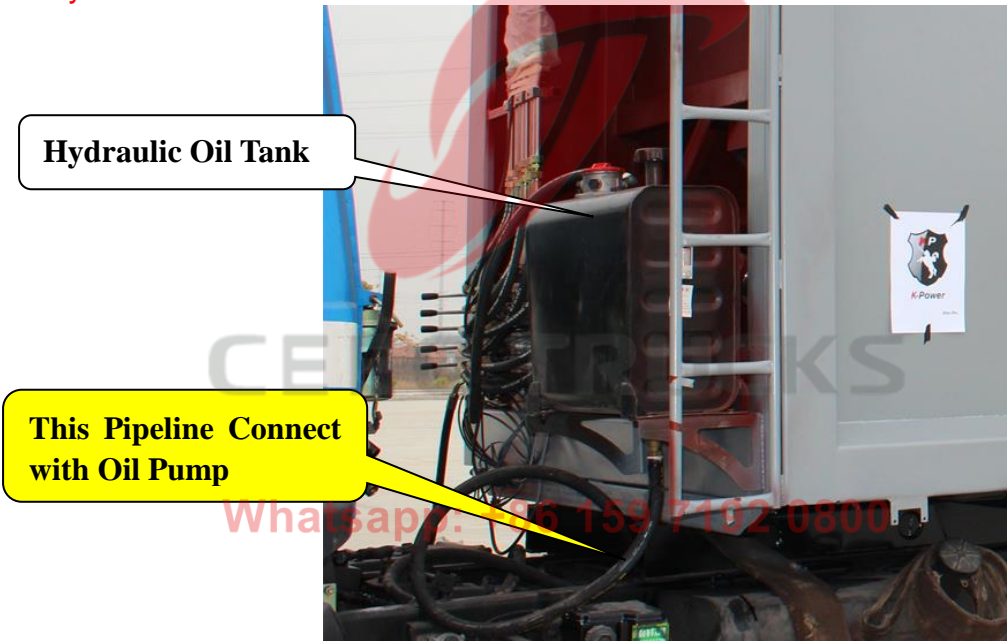


7. PTO

8. Five Function Multi-way Valve



9. Hydraulic Oil Tank



10. PLC Control Box

**PLC Control Box
(Install in Cab)**



11. Electric System

Side Lamps System

**The side light system
connect with Tail
Light to work**



Whatsapp: +86 159 7192 0800

12. Balance Valve

13. Hosepipe, oil pipe & Joint

14. Slide Plate Oil Cylinder



15. Scraper Oil Cylinder



16. Lifting Oil Cylinder

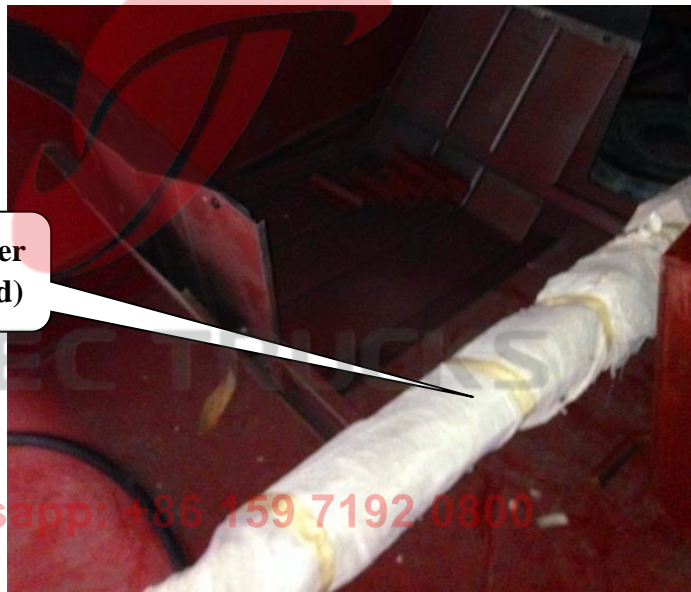


17. Tilt Device Oil Cylinder



Tilt Device Oil Cylinder

18. Push Plate Oil Cylinder



**Push Plate Oil Cylinder
(All been well protected)**

Whatsapp: +86 159 7192 0800

19. Sliding Block



Slide Block

Slide Block

20. Hose Protector

21. Ball Valve

Ball Valve



22. Stainless Steel Cover

Stainless Steel Cover



Whatsapp: +86 159 7192 0800

23. Side lamps

**Side Lamps
(Each side has Three)**



Number 24-29 Others

24. Cushion

Cushion



**Cushion installed in this place
(Between the Auxiliary Frame
& Chassis Frame)**

Whatsapp: +86 159 7192 0800

25. U-style Bolt

U-style Bolt and Spacer



26. Plastic Fender (semicircle)

Fender (Semicircle)



27. Side Fence Assembly

Side Fence Assembly



28. Waste Water Tank Assembly (With Support)

Waste Water Tank Assembly

Support

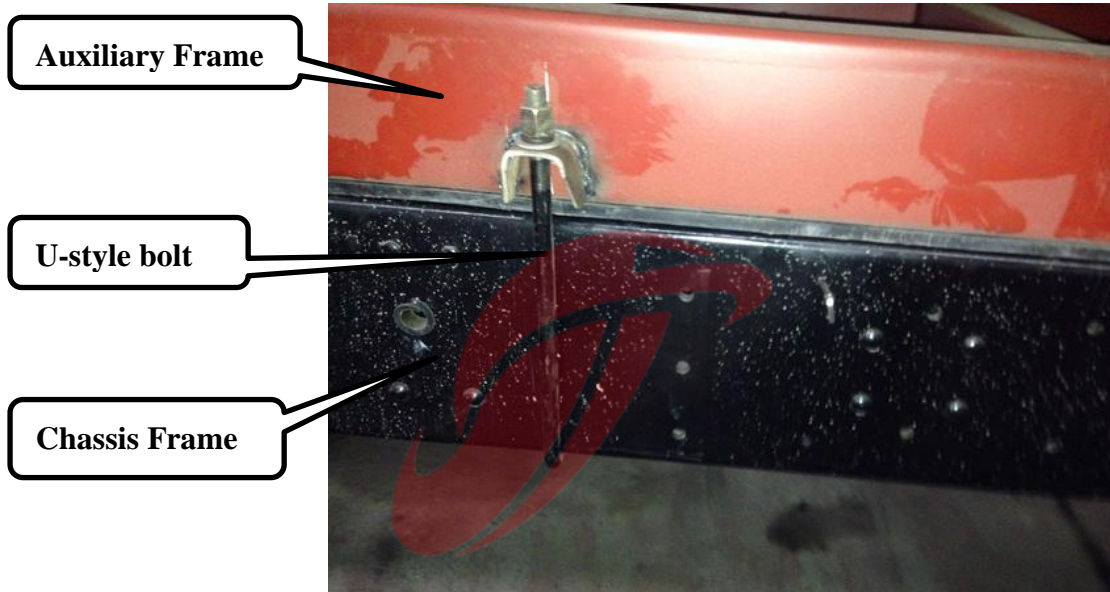


29. Standard Part

Read the following guidance to install the Garbage Compactor:

Steps 1:

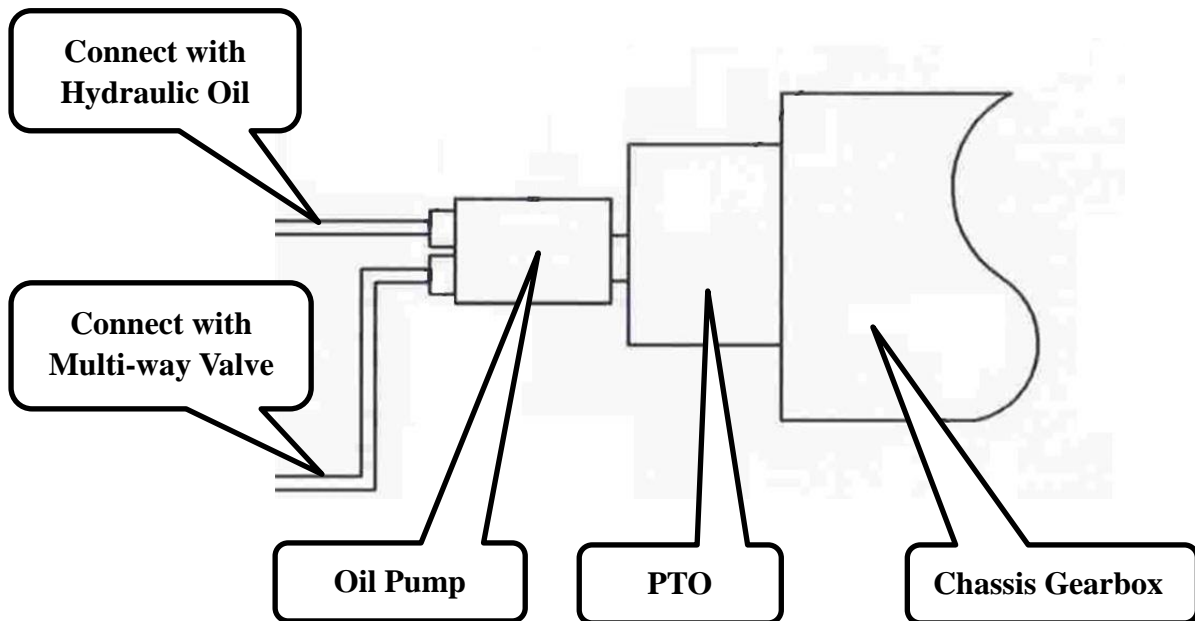
Fix the Garbage Compactor on the Chassis: Use U-style bolt to connect chassis frame and auxiliary frame.

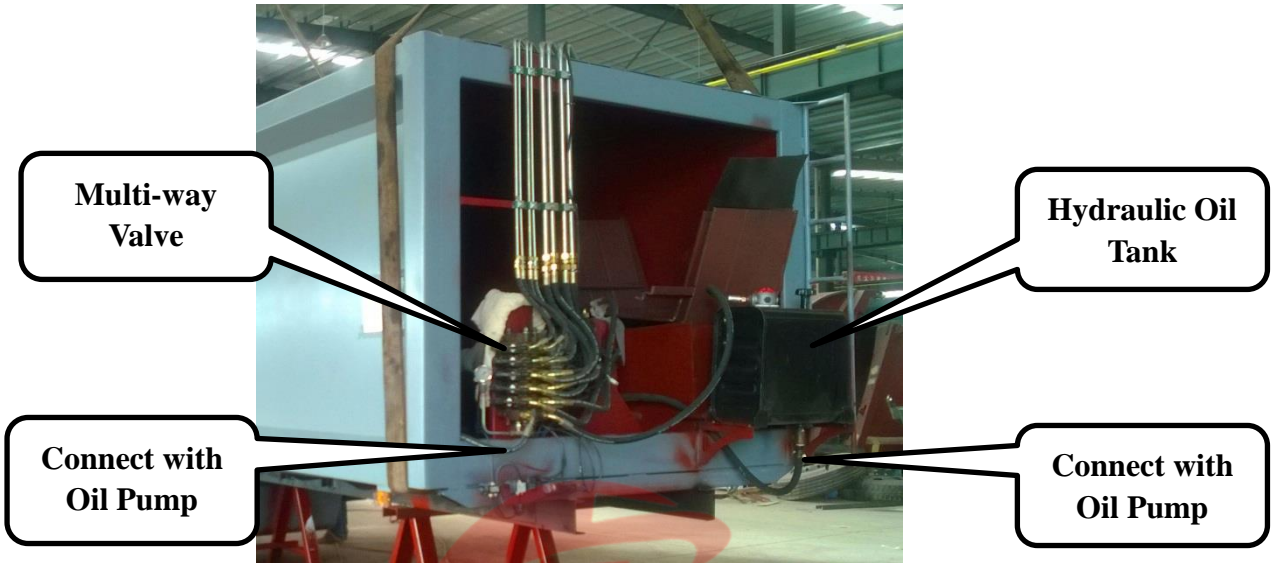


CEEC TRUCKS

Steps 2:

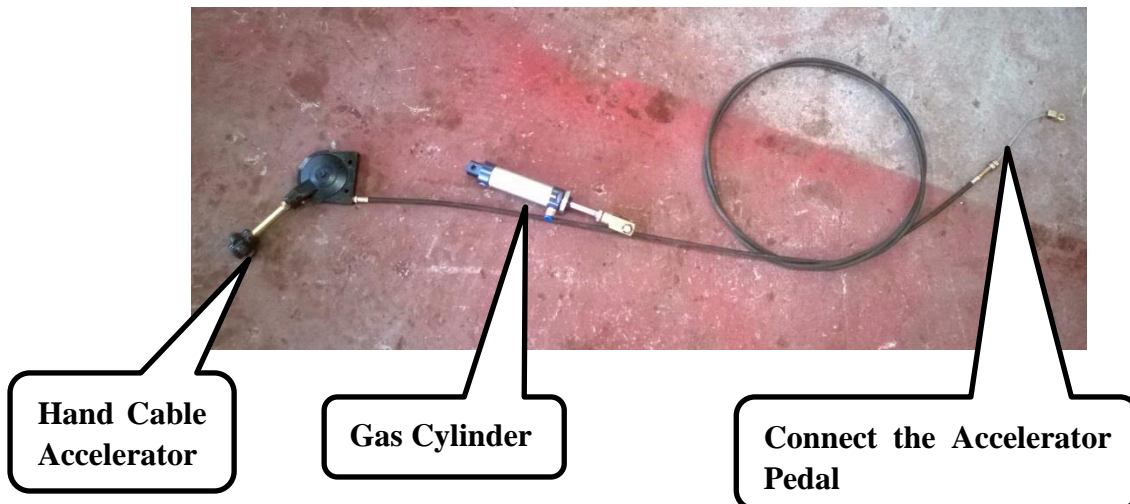
Install the PTO & Oil Pump on Chassis Gearbox; then connect the Garbage Compactor and the Chassis by using oil pipeline.





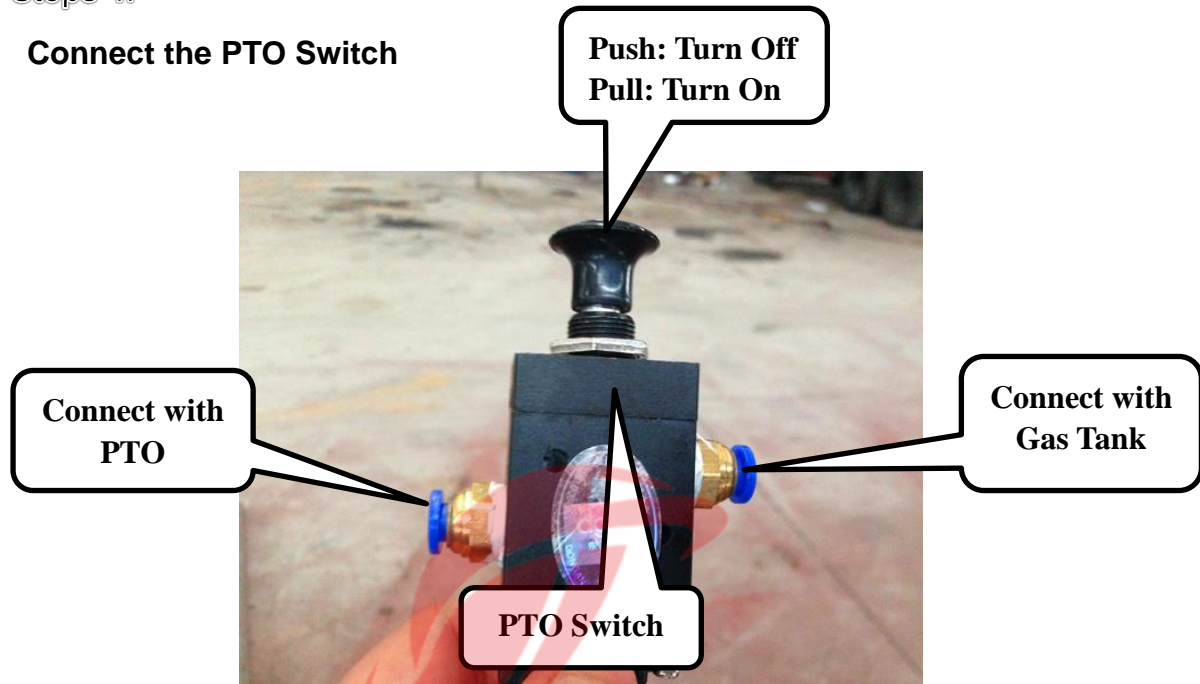
Steps 3:

Connect the Gas Cylinder and Hand Cable Accelerator.



Steps 4:

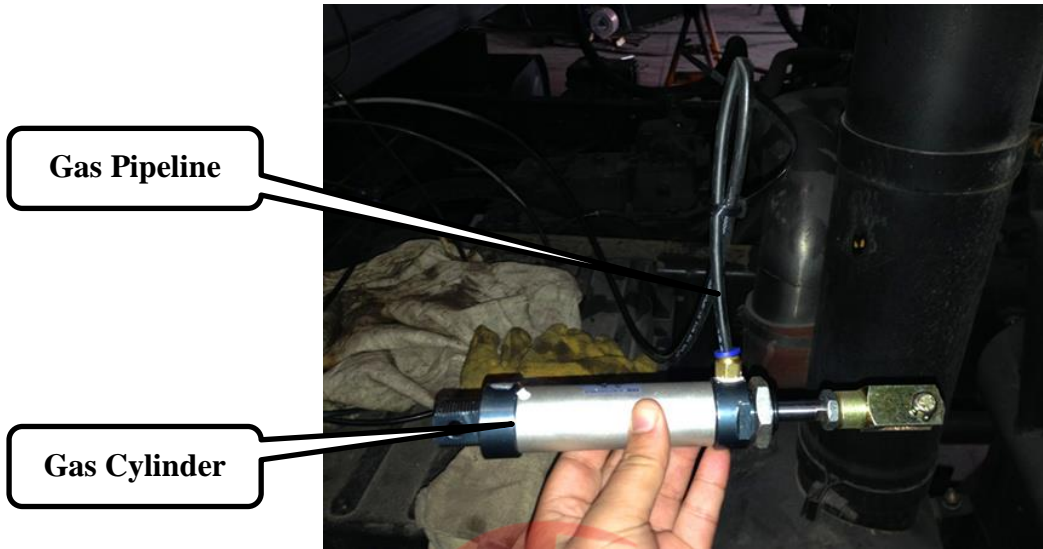
Connect the PTO Switch



Steps 4:

Connect the gas pipeline:





Steps 5:

Connect the Side Lamp to work:

